

January 23, 2021

Asbury Lay Leadership Meeting



ASBURY

Helping Others Follow Jesus

2020 ASBURY STATISTICS

4

New Discipleship
Communities

19

New Choir and
Orchestra members

100

Student Confirmations



204

Night of Joy



1,025

phone calls or visits to
members in the hospital

1,300

Attended the
Radical Kindness
Jill Donovan Event

196

New members
joined Asbury

3,224

COVID phone calls to
Asbury members

88

members
passed away

2,466 Average weekly worship
909 in-person | 1,557 online

46

Baptisms



130

Couples Trivia Night



613

Average attendance
in Discipleship
Communities

4,909 attended Christmas Services
2,893 in person | 2,016 online

Estimated 17,000 households watched on Channel 2

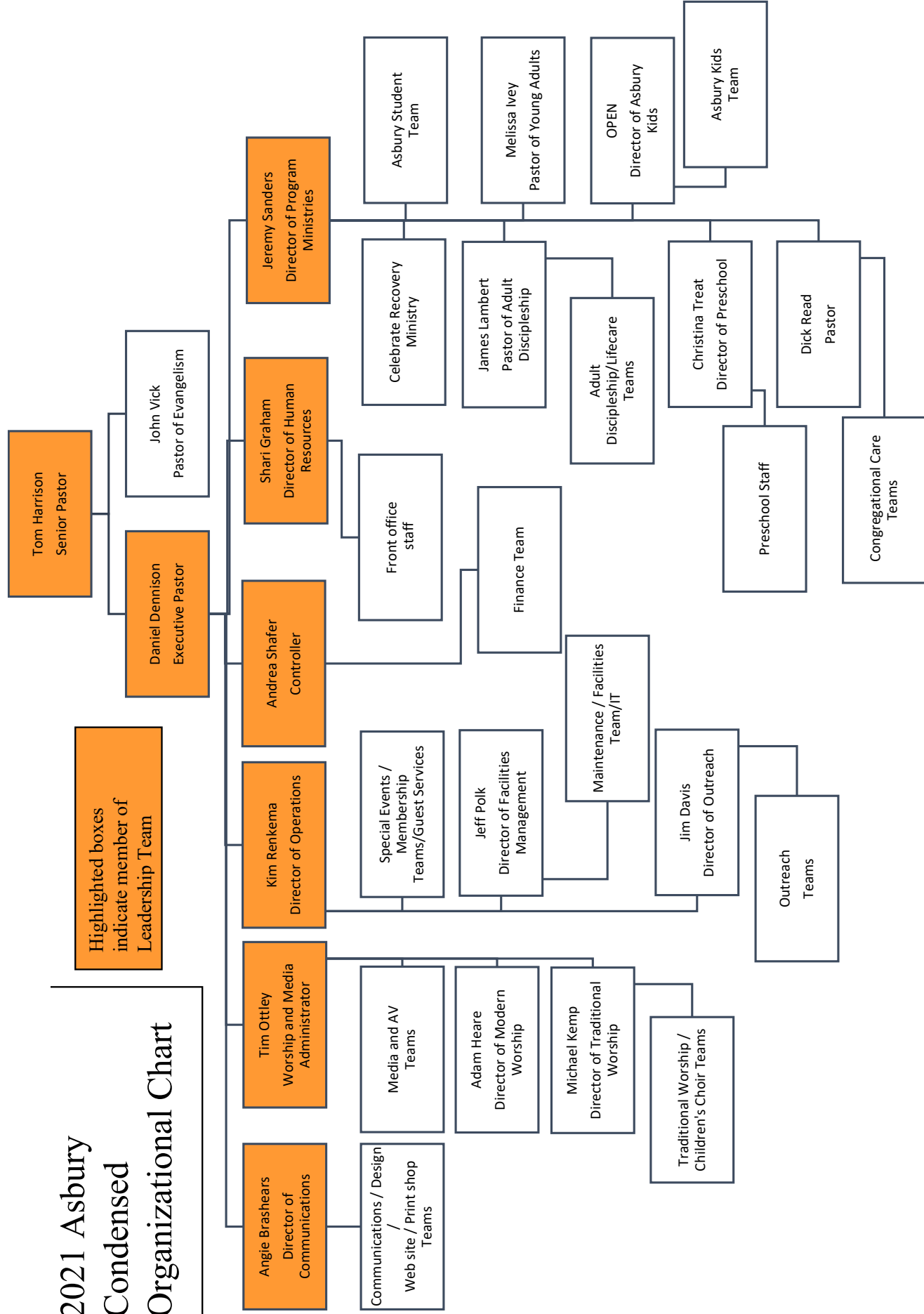
2020 OUTREACH STATISTICS



- Collected and distributed **411** senior adult goodie bags
- Collected and distributed **1,006** school supply and snack bags for Whitman and Grove Elementary
- Gave out **603** gift cards to St Francis non-medical employees
- Collected and distributed **8,000** pounds of food to Bixby Outreach, Dream Center, Operation Hope, and three local Hispanic churches
- Collected and shipped **500** Freedom Boxes
- Distributed **19** tractor trailers of food to about **9,500** cars
- **2,300** cars received prayer at our food distribution events and **50** of those people prayed to receive Jesus for the first time

2021 Asbury Condensed Organizational Chart

Highlighted boxes indicate member of Leadership Team



A snapshot of Asbury's Governance Descriptions

People elected to these Committees reflect Asbury's ethos

1. Mature Christians who are committed and connected to Asbury
2. Leaders and learners who will engage (**Confident Humility/Genuine Kindness**)
3. Committed to work with others and will attend meetings (**Committed Team Player**)
4. Accountable to + supportive of Asbury's and The United Methodist Church governance

Administrative Council (AC) - 12+ members: Meetings last 1 ½- 2 hours on the 4th Tuesdays. Members are the chairs of Trustees, SPRC, Finance, Asbury Foundation, the Lay Leader(s), chairs of UMW, UMM + additional ad hoc members. This is the final administrative body of Asbury. AC members form the "Charge Conference." (This is the relationship with the District + Oklahoma Annual Conference. A "Church Conference" is only called when the total Church membership should vote on an item of great significance.) AC gives final approval to all governing committees. **John Celoni** is the chairperson beginning January 2021.

Staff-Parish Relations Committee (SPRC) - 9 members: Monthly meetings last 1 ½ - 2 hours on the 2nd Tuesday at 6:00 p.m. SPRC deals with personnel, staff budget, and policy issues. Confidentiality is crucial. SPRC incorporates a wide variety of individuals who maintain both a care for the staff and an understanding of best business practices. **Barry Ewy** is the chairperson.

Board of Trustees - 9 members: - They meet every other month for hour on the 3rd Sunday at 8:00 a.m. The Trustees oversee and supervise all Asbury property. Membership needs a variety of backgrounds (electricians, project managers, attorneys, insurance agents, lawyers, etc.) **John Points** is the chairperson beginning January 2021.

Finance - 9 members: Monthly Meetings last an hour held on the 3rd Tuesday at 5:30 p.m. They oversee the finances of the church. They determine the appropriate amount for the annual budget and recommend it to the Ad Council for approval. They recommend best stewardship practices for ministry funds. They ensure the financial areas of the church are documented, legal and well maintained (audits, checks/balances in our accounting system, etc.) Committee members have a variety of business background (not just CPA's). **Andrea Shafer**, Asbury Controller leads the meeting and **Randy Cloud** is the chairperson.

Asbury Foundation - 9 members: Our Foundation meets at least quarterly. They oversee the assets of and work to grow contributions to The Foundation. The committee members understand how Foundations work and advocate for best business practices. **Jim Arens** is the chair.

Lay Leadership - 9 members: They recommend or nominate various members of Asbury to fill all governance committees with committed, gifted and willing to serve Asbury members. The committee usually meets twice in the fall. The **Executive Pastor** is the chairperson.

Lay Leader(s) - They can attend all of Asbury's governing committees. They understand in a broad and comprehensive way the totality of the governance needs of the Church. They counsel with all the chairs of the committees. **Trey and Jamie Cooper** are Asbury's Lay Leaders beginning January 2021.

ADMINISTRATIVE COUNCIL

(meets 4th Tuesday)

Chairs - John CeloniClass of 2021

Sharon Linsenmeyer

Class of 2022

Justin Nelson

Class of 2023

Becky Williamson

*By Office : Finance Chair, SPRC Chair, Trustee Chair, Foundation Chair**Jim Furman (UMM), Mary Alice Ahlgren (UMW),**Trey and Jamie Cooper (Lay Leaders)***TRUSTEES**

(meets every month on the third Sunday at 8:00am)

Chair - John PointsClass of 2021

Craig McElwain

Class of 2022

Terry Cupp

Class of 2023

Jeff Thomas

Carl Vincent

Sarah McPhail

Tracy Rinehart

John Points

Rocky Goins

Greg Johnson

*By office: Trey and Jamie Cooper (lay Leaders), Daniel Dennison & Jeff Polk (staff)***STAFF PARISH RELATIONS**

(meets 2nd Tuesday)

Chair - Barry EwyClass of 2021

Mike Burkhart

Class of 2022

Kim Bourke

Class of 2023

Barry Ewy

Leslie Runyan

Laura Hawkins

Liz Mitchell

Trevor Howard

Rich Fickens

Jim Lefler

*By Office: Trey and Jamie Cooper (Lay Leaders) Daniel Dennison-staff***FINANCE**

(meets 3rd Tuesday)

Chair - Randy CloudClass of 2021

Paige Miller

Class of 2022

Chris Ebright(2020)

Class of 2023

Randy Cloud

Sara Rogers

Kristen Fennema

Ken Hedrick

Gary Belitz

Greg Ruley

Brett Krieg

*By Office: Lay Leader, SPRC and Trustee Chair, Andrea Shafer and Daniel Dennison***LAY LEADERSHIP COMMITTEE****Chair - Daniel Dennison**Class of 2021

Pat Calhoun

Class of 2022

Jamie Cooper

Class of 2023

Randy Cloud

Jennifer Points

Brandon Disney

John Celoni

Deanna Cloud

Matt Rogers

Barry Ewy

Asbury Foundation**Chair - Jim Arens**Class of 2021

Mike Hill

Class of 2022

Jim Arens

Class of 2023

Kevin Short

Larry Krieg

Tom Brinner

Kendall Johnson

John Curzon

Charles Redd

Rance Pappan



Better Together PROJECT UPDATE

** Income **	Actual Pledge	Actual Income as of 12/31/20
Pledges	\$13,401,789.00	\$8,501,198.62
** Expense **	Budget	Actual Spent as of 12/31/20
Fundraising Costs	\$250,300.00	\$226,942.07
Student Building	\$5,803,514.00	\$4,030,832.72
North Portico	\$1,011,827.00	\$570,270.91
Development Center (Venue) - <i>**Estimated Budget**</i>	\$2,897,000.00	\$23,236.00
Construction Cost Totals	\$9,962,641.00	\$4,851,281.70
Net Pledges Avail for Endowment	\$3,439,148.00	
Total Better Together Project Expenses	\$13,401,789.00	\$4,851,281.70
Cash on Hand		\$3,649,916.92

Project Status

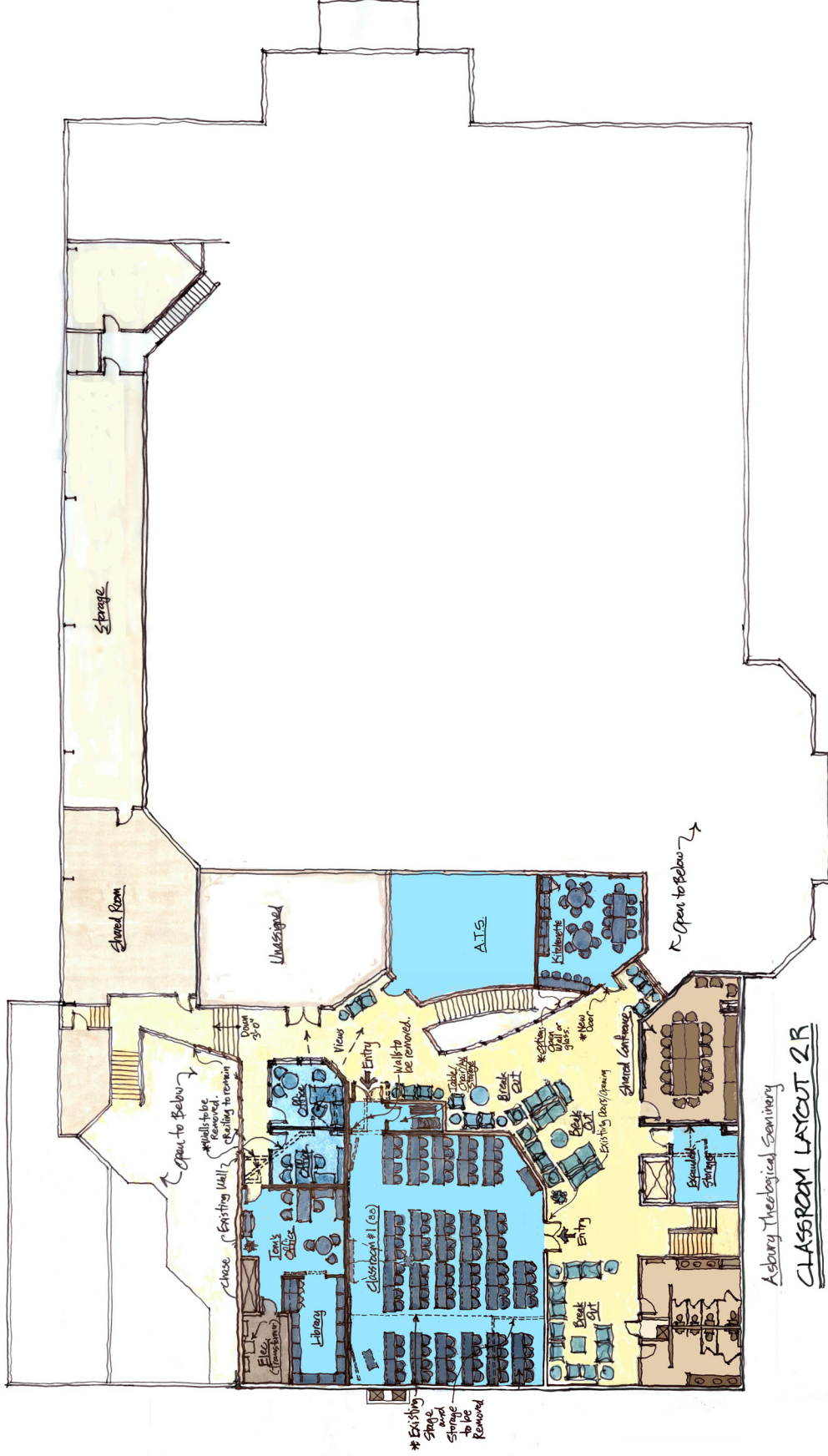
Student Building & North Portico

- Final Inspections / Waiting on occupancy permits
- Parking lot paving and striping
- Waiting on Signage
- Audio Visual is finishing up over the next two weeks
- Punch Lists
- Grand Opening is February 28, 2021

Development Center

- Schematic Designs Received GH2 Architects
- Stava Construction initial projected estimates due by 1/25/2021
- Estimated Timeline:
 - January 2021 - Design Development
 - February/March 2021 - Construction Documents
 - April/May 2021 - Bidding & Permitting
 - May 2021 - Begin Construction
 - January 2022 - Construction Complete

CONCEPTUAL DESIGN



SECOND LEVEL FLOOR PLAN
1/8" = 1'-0"
0 12 6 16 NORTH

Asbury Theological Seminary
CLASSROOM LAYOUT 2R

ASBURY UNITED METHODIST

General Operating Budget Comparison

	2020			2021	
Apportionments	\$ 411,746.00	4.67%		\$ 387,914.00	4.39%
Missions & Outreach	\$ 1,041,564.40	11.81%		\$ 997,480.00	11.30%
Salaries & Benefits	\$ 4,879,000.00	55.32%		\$ 4,758,285.00	53.89%
Maintenance & Utilities	\$ 843,964.00	9.57%		\$ 887,074.00	10.05%
Program Expenses	\$ 453,446.60	5.14%		\$ 510,762.44	5.78%
Support Services	\$ 753,279.00	8.54%		\$ 788,484.56	8.93%
Long-Term Capital Maintenance	\$ 437,000.00	4.95%		\$ 500,000.00	5.66%
	<u>\$ 8,820,000.00</u>			<u>\$ 8,830,000.00</u>	

WHAT IS INCLUDED IN THESE BUDGET CATEGORIES?

Apportionments – Conference Apportionments paid to The Oklahoma Annual Conference of the United Methodist Church and District Apportionments paid to the Council Oak District

Missions & Outreach – Perceptions radio series, Global Outreach, Local Outreach, and Volunteers in Missions (VIM) trips

Salaries & Benefits – Salaries, Retirement, Health, Life, Disability, and Worker's Comp Insurance

Maintenance & Utilities – General Maintenance and Repairs on the Facility and Vehicles, Utilities, and Security

Program Expenses – AsburyKids, Asbury Students, Adult Discipleship, LifeCare Groups, Congregational Care, Prayer, Evangelism, and Worship

Support Services – IT, Food Services, Guest Services, Events Team, Communications, Finance, HR, Membership

Long-Term Capital Maintenance – Budgeted funds to off-set the Long-Term Capital Maintenance and Improvements of the existing building

WHAT IS NOT INCLUDED IN THE GENERAL OPERATING BUDGET?

Designated Giving – money given to a specific cause is not included in the General Operating Budget to ensure that it is utilized for the intended ministry or organization

Capital Budget – in addition to the budgeted money for Long-Term Capital Maintenance, the Capital Budget is funded through Capital Designated dollars and the Capital Endowment when necessary

Asbury Foundation – Endowments and scholarships held by the Asbury Foundation are in addition to the General Operating Budget and Designated Funds

STRATEGIC INITIATIVE FOR 2021:

Grow and Unite



As a healthy church, Asbury should grow:

Grow up (spiritual development)

Grow out (evangelism)

Grow deep (biblical wisdom)

As a healthy church, Asbury should unite:

Unite in Jesus

Unite around scriptural authority

Unite in the midst of divisive issues